



WELCOME

Welcome to our Second Newsletter.

We would like to take this opportunity to extend a warm welcome to all newcomers - students and staff and we are delighted to inform you that our Licence has been re-instated and our new building in Spray Street is almost ready. For those of you currently revising for exams, we would like to wish you the very best of luck.

Yours sincerely,
Shekhar Sharma
Principal

UKBA NEWS

It is great to have our licence back. We have now received our Action Plan from UKBA on which we have already addressed most of them and working to meet the rest of the requirements.

We must:-

- Improve attendance to 85% and take action against poor attendees.
- Record reasons for lateness
- Reduce lateness. Lateness will be recorded and action will be taken against persistent latecomers. You must be ready to start at 9.00am and 2pm.
- Have up to date contact records – you MUST tell us when you change your address or phone number



You have a big responsibility to play your part with this. Thank you for your co-operation.

- If you cannot attend class for a legitimate reason you must phone us and give us a reason. This will be recorded on your file and on the computer system.
- If you are ill you must phone us.
- When you return to college you must give us a written explanation about your absence, which includes dates plus a medical certificate if you are ill for more than 7 days. If you do not bring a medical certificate you have 7 days to get one from your doctor or you will be reported to UKBA.

All absences must be explained and the reasons recorded on student files.

UKBA have now raised our college attendance target from 80% to **85%**. Everyone has a responsibility to meet this target in order to comply with Tier 4 rules. Action is currently being taken against students whose attendance has failed to improve. This is a vital key issue that we must address....

STUDENT ATTENDANCE CONGRATULATIONS

Some of our students are to be commended for very pleasing attendance percentages of 85% and above. A special mention goes out to the following students for almost 100% attendance. A FANTASTIC ACHIEVEMENT!!! CONGRATS...

- | | | |
|------------------------------|-----------------------------|--|
| ★ Pathak Hari Sharan | ★ Subedi Binaya | ★ Shrestha Khaitu Joshi Bishnu Devi |
| ★ Giri Bijendra | ★ Silwal Sakila | ★ Shrestha Suresh Kaji |
| ★ Chudal Gokul Prasad | ★ Rana Rashmi Singh | ★ Rai Dilli Ram |
| ★ Singh Bipul | ★ Shrestha Sristi | ★ Adhikari-Pandey Sima |
| ★ Mulmi Ajay | ★ Garhwal Ramswaroop | ★ Bhandari Sabita |
| ★ Kapri Raju | | |

THANK YOU AND VERY WELL DONE...

ABE ACCREDITATION

We are delighted to announce that we have been awarded accreditation by ABE. They visited us earlier this year and were very pleased with their findings.

OFFICE MOVE TO SPRAY STREET BUILDING

Our Administrative office has now moved to **15 Spray Street, Woolwich SE18 6AP**, our telephone and fax number will remain the same. The building work is progressing really well and we expect the work to be completed very soon. We will then be able to commence the next phase of our development...

FEES INFORMATION - REGISTER NOW !!!

Fees for our current students for the next year 2010/2011 have been announced and all students are encouraged to take the benefit of subsidised fees by registering their names before the end of May.

Immigration Advisor Appointment

We are pleased to welcome Mr Sunil Adhikari. He is a registered, qualified Immigration Adviser. He will be based in Spray Street for 2 days per week. He will be available to give advice to any students with queries surrounding immigration. We will let you know the days he will be available when it has been confirmed.

CURRICULUM INFORMATION

Dear Students,

Through this News Letter I would like to give you some information about the courses we offer here at LCEM. All these are brilliant courses. But before I go into the details of the courses, I would like to say a few words.

Firstly, you should know about the various courses being offered by the college. Secondly, go through the various courses and choose the one that you like to pursue. Thirdly, find out (I) the assessment methods, (II) registration deadline with the awarding bodies, (III) registration fees, (IV) examination registration deadlines, (V) examination fees etc. If the assessment of the course you have chosen is by course work find out the assessment submission deadlines from your tutor and make sure that you submit your course work by the given deadline. More importantly, don't miss your class, always be regular and you will have no problems in successfully getting the qualification that you expect to get.

I hope the following information will help you to know about the various courses and help you to decide on what course you would like to do. Have a look of the following qualifications and if you have any queries, concerns please contact me and I will try my best to make it clear to you.

Courses are

1. Edexcel Level 7 "Advanced Professional Diploma in Management Studies (APDMS)"
2. Edexcel Level 5 BTEC "Professional Diploma in Management Studies"
3. ABP Postgraduate Diploma in Business Studies (Level 7)
4. ABE Diploma Qualifications
5. ABE Advanced Diploma Qualifications
6. BCS Certificate in IT
7. BCS Diploma in IT
8. BCS Professional Graduate Diploma in IT
9. ACCA
10. Teacher training Course

For further course details please go to our website www.lcoem.com

Arka R Timsina
Head of Management Studies

C L A S S S C H E D U L E						
Days	R O O M					
	101	102	201	202	301	302
Monday		AM-Shameem-MM EDEXCEL 5 GR I PM-Sangita-R&S			AM-Sangita-R&S EDEXCEL 5 GR III PM-Shameem-PI	
Tuesday	AM-Bishnu-Practical NEBDN BOTH GRPS PM-Sanju-Theory	AM-Narayan-R&S EDEXCEL 5 GR I PM-Shameem-MM			PM-Shameem-M P EDEXCEL 5 GR III AM-Sangita-CaW	
Wednesday	AM-Bishnu-Practical NEBDN BOTH GRPS PM-Sanju-Theory		AM-Shameem-SMM EDEXCEL 7 PM-Shameem-SMM			
Thursday	AM-Sangita-R&S EDEXCEL 5 GR II PM-Shameem-MM		AM-Dr. Sideek-MFSM EDEXCEL 7 PM-Arka-Tutorial		AM-Shameem-PI EDEXCEL 5 GR IV PM-Sangita-R & S	
Friday	AM-Sangita-R&S EDEXCEL 5 GR II PM-Shameem-MM				AM-Shameem-M Per EDEXCEL 5 GR IV PM-Sangita-CaW	

MM=Managing Marketing PI= Promoting Innovation
R&S= Recruitment and Selection MP= Managing Performance
MFSM=Managing Finance for Strategic Managers

A SPECIAL PARTY...

We held a party to celebrate our Licence and the New Year that many people were also celebrating. It was held in the new building in a large space which will be our future Library. The DJ provided some cool sounds, the food was great and a good time was had by all as our photos show....



GENERAL ELECTION NEWS: HELLO NICK & DAVE..... GOODBYE GORDON !!!



The General Election was held on May 6th 2010. When the votes were counted, no party had a clear majority. This means we must have a 'hung parliament', (yes, same as Nepal therefore we have something in common !!!). Because there is no clear winner, the parties have to join together to form a Coalition Government. The winners are: Prime minister - David Cameron (Conservative Party) & Deputy Prime Minister Nick Clegg (Liberal Democrats Party)...



NEW STUDENT COUNCIL (a culture change...)

We would like to set up a mechanism for student concerns, issues and ideas to be heard in a democratic way. We would like every class to elect 2 class representatives, preferably one male and one female. The Student Reps will have regular meetings with the Senior Management Team to discuss any issues or ideas you may have. As your elected Representative, they will speak on your behalf. We will be able to sit round the table to discuss your concerns in a constructive way. This means that issues can be dealt with in a democratic way as your views are very important to us.

HAVE AN ELECTION!!! ELECT YOUR REPS!!!

Each class needs to choose 2 Reps. Please give the names to either Arka or Thelma. We can then move forwards in a fair, constructive and democratic manner. All constructive suggestions are welcome!!!



SPRING IS HERE!

Temperatures are starting to get warmer at this time of year, but there is often the risk of quite heavy showers. The days are becoming longer and sunnier: this encourages more flowers to bloom, including cherry blossoms and tulips. Sporting events include the Grand National (horseracing) and the London Marathon. If you want to go to Chelsea Flower Show in May or to one of the summer's outdoor rock festivals, book your tickets now. The Easter holiday takes place during April.



THE LONDON MARATHON, SUNDAY 25TH APRIL

The London Marathon has been taking place each year since 1981. Many of the runners are taking part in order to raise money for charity. There are three starting points close to Greenwich Park Races start between 9am and 10am. The nearest railway stations are Maze Hill or Blackheath; Greenwich train station and the DLR station at Cutty Sark are also close. The race ends on The Mall in front of Buckingham Palace, near Green Park, Victoria and St James's Park underground stations). The centre of Greenwich (near the boat called the "Cutty Sark") and the area near to the finishing line can become very busy (most of The Mall contains seats and can only be accessed by people with tickets) If you want to apply to run in next year's race, obtain a copy of London Marathon News from a local sports shop between August and October.



APRIL FOOL'S DAY, THURSDAY 1 APRIL 2010

Be careful - it is traditional for people to try to trick you ("fool you", "play a practical joke on you"). This is meant to be for fun, so try not to take it too seriously if someone tries a joke on you or tries to make you believe something strange. One of the most famous examples in Britain was a documentary shown on television about the spaghetti harvest in Italy! Many people believe that someone should only be tricked in the morning; otherwise the person who is doing the tricking is the "fool". The tradition may have started in France, where New Year's presents used to be exchanged on April 1st. In 1582 the Western calendar was changed, and New Year's Day was moved from 25th March to 1st January. Some people kept their former New Year's customs, but other people would think they were fools and would make fun of them. The custom of fooling people on this day was later copied in Britain and many other parts of the world.

EASTER

The Easter weekend is the time when Christians remember the time that Jesus Christ was killed on a cross and later came back to life. People eat "hot cross buns": currant buns with a symbol on the top which represent the cross on which Jesus was killed (these are cut in two, toasted, and butter is spread on each half). The date of Easter changes each year, but it is always between the end of March and the end of April.

Easter is named after the Anglo-Saxon goddess of spring (Eostre). Eggs and bunnies (baby rabbits) are two symbols that represent new life. There are many Easter traditions involving eggs, including eating chocolate Easter eggs, egg races, egg hunts and egg painting.

Maunday Thursday

This is when Christians remember the Last Supper, when Jesus met with his followers before he was betrayed by Judas and was captured by the Romans.



Good Friday

A public holiday in the UK. Some supermarkets and larger shops will be open, but many local shops will be closed. Buses and trains will run, often with a service that is similar to a normal Saturday or Sunday service. Good Friday is the day when Christians remember the death of Jesus Christ, who was crucified (killed on a cross) by the Romans. Christian churches hold special services.

Easter Sunday

Special Easter Sunday services in Christian churches celebrate the belief that Jesus Christ came back to life on the third day after he was killed (known as the "resurrection"). There are special Easter Sunday religious services. Churches are often decorated with flowers. Children are often given chocolate Easter eggs by their parents or relatives. Sometimes eggs are hidden and children hunt for them in the house or garden. Note that many shops are closed on Easter Sunday, even if they normally open on other Sundays.

Easter Monday

A public holiday in the UK. Christians believe that this celebrates when Jesus ascended to Heaven.



SHAKESPEARE'S BIRTHDAY

23rd April is the day on which the birthday of William Shakespeare (England's most famous writer) is celebrated. Shakespeare's birthday is specially celebrated in Stratford-upon-Avon, the town where he was born. There is a street procession from his birthplace to the church where he was buried and other entertainment with a Shakespearean theme.



1. Shakespeare's birthday: Tudor music

2. Shakespearean plays at the Globe Theatre, London

ANZAC DAY, SUN 25TH APRIL 2010



The name ANZAC is an abbreviation for the Australian and New Zealand Army Corps. Today is the anniversary of the Battle of Gallipoli, which took place in Turkey on 25 April 1915 (starting at dawn), during the First World War. 50,000 Allied soldiers (from Britain, Australia, New Zealand, France and India) and 87,000 Turkish soldiers died, and many more were injured. This was the first time that soldiers from Australia and New Zealand had been involved in a major battle. Australians and New Zealanders use this occasion to remember those who have served their countries and the Commonwealth in times of war.

THE WEEK THAT THE NORTHERN HEMISPHERE STOOD STILL!

EYJAFJALLAJÖKULL

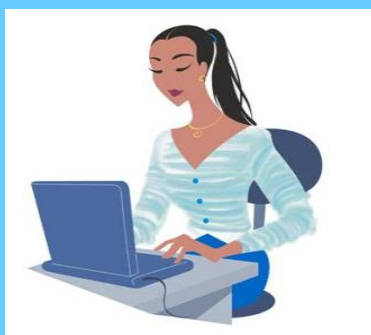
Airports were closed for several days due to the news that the Icelandic volcano, Eyjafjallajökull was erupting and a huge cloud of volcanic dust was blowing towards Europe and the UK, making the airspace too dangerous to fly in. This prompted the worst breakdown in civil aviation in Europe since World War Two, with about 100,000 flights cancelled.

Eyjafjallajökull is a **shield volcano**. These are formed by eruptions of thin, runny lava. Eruptions tend to be frequent but quite gentle. The gentle slope of the volcano has been built up from lava flow. The largest active shield volcano in the world is in Hawaii! Iceland is on a 'hot spot'.

Did you know that:

- One third of Iceland is volcanically active.
- Iceland grows by about 2-3 cm every year.
- It is thought that Iceland will eventually be split in half.
- The last time that the *Eyjafjallajökull* volcano erupted was in 1821. (It lasted until 1823!)
- *Eyjafjallajökull* has also erupted in 926 and 1621.
- Another volcano, *Katla*, has a history of erupting whenever *Eyjafjallajökull* does. Watch this space!

SOME THOUGHTS: Will this latest eruption of *Eyjafjallajökull* last for 2 years, like it did in 1821.....?



MONIKA'S REMINDERS

Dear Students,

- ✚ Please remember that you can receive a vacation letter only one week before the vacation starts. Official vacation dates are: 15.06.2010 - 31.07.2010 for Edexcel Level 5, Groups 1 & 2, ABE - all groups, Dental Nursing and ACCA. Edexcel Level 5 - groups 3 & 4 have no vacations because they need to finish course by November/December. BCS students started their vacation on 26th April and will be back on 30th June 2010.
- ✚ We need 1 to 3 days to issue any kind of letter. Please fill forms carefully, preferably with capital letters that will help me to issue letters as quickly as

possible.

- ✚ You now can use our new e-mail: attendance@lcoem.com to check your attendance. The responses will be sent on Fridays. Please be patient.
- ✚ Always make sure that your personal details; address, phone number or e-mail, are up to date and correct. If you want to be sure fill 'Change of home address form'.

Good luck with your assignments and exams!

Monika